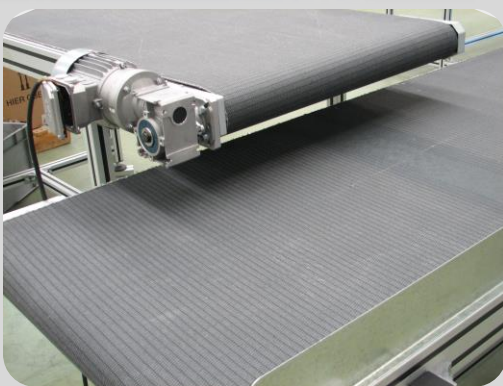
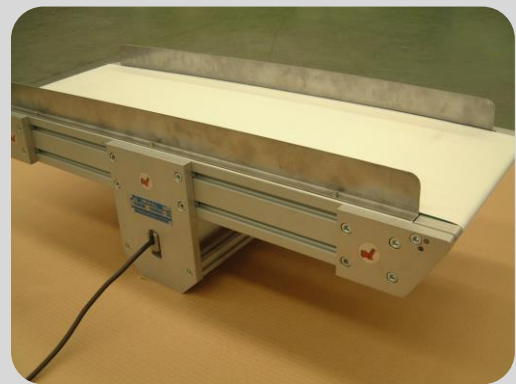



# NT 100

Transportador de banda  
Belt chain conveyor



 En los procesos productivos actuales son necesarios el movimiento de cargas o materiales entre puestos o zonas de trabajo.

Para ello NIKAI SYSTEMS dispone de un gran abanico de transportadores de banda dependiendo de la forma y del peso del producto a transportar o bien de la disposición física donde ha de instalarse el equipo.

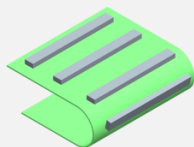
El concepto de nuestros equipos es modular, por lo tanto no es necesario el empleo de técnicas de soldadura o de acabado de los materiales.

Disponen de una gran cantidad de elementos de unión, bien para sus posteriores ampliaciones en el caso de ser necesarias o bien para la instalación de cualquier tipo de accesorios a montar en el equipo como guías, topes, fotocélulas, etc.



### Tipos de banda

- PVC
- FDA
- FELPA (Anticorte)
- Nido de abeja
- Poliuretano (PU)
- Acumulación (superdeslizante)



### Sectores de aplicación

- Automóvil
- Auxiliar del automóvil
- Plástico e inyección
- Cosmética y farmacéutica
- Electrónica
- Alimentación
- Soldadura



In the current production processes, the movement of loads or materials between work stations or areas is necessary.

For this NIKAI SYSTEMS has a wide range of belt conveyors depending on the shape and weight of the product to be transported or the physical layout where the equipment is to be installed. The concept of our equipment is modular, therefore it is not necessary to use techniques of welding or finishing materials.

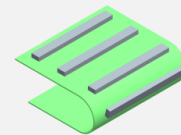
They have a large number of joining elements, either for later extensions if necessary or for the installation of any type of accessories to be mounted on the equipment such as guides, stops, photocells, etc.

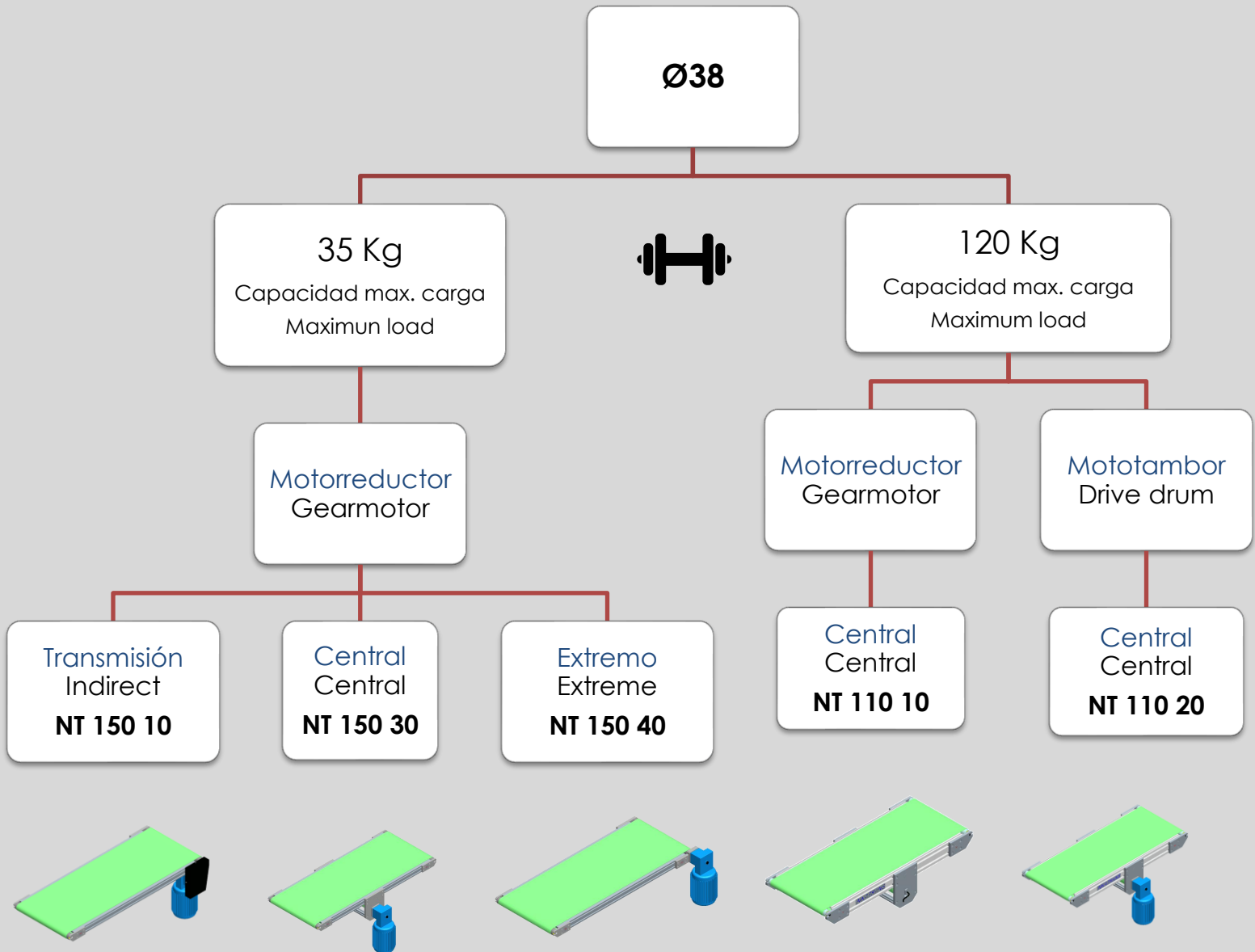
### Application sectors

- Automovile
- Automovile auxiliary industry
- Plastic injection.
- Cosmetic and Pharmaceuticals
- Electronics
- Feeding
- Welding

### Type of bands

- PVC
- FDA
- Poliuretano (PU)
- Accumulation





Ø80

120 Kg  
Capacidad max. carga  
Maximum load



Extremo  
Extreme

Transmisión  
Indirect

Central  
Central

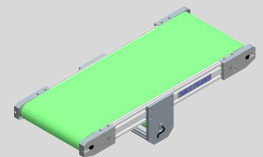
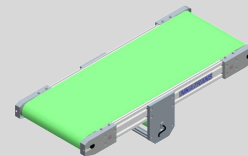
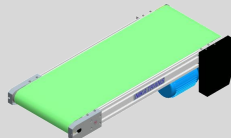
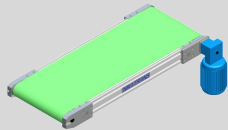
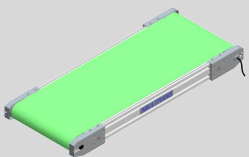
Mototambor  
Drive drum  
**NT 121 10**

Motorreductor  
Gearmotor  
**NT 121 21**

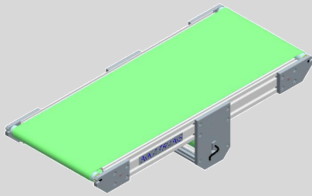
Motorreductor  
Gearmotor  
**NT 121 25**

Mototambor  
Drivedrum  
**NT 121 30**

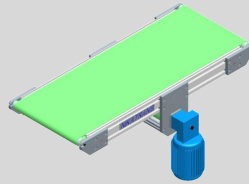
Motorreductor  
Gearmotor  
**NT 121 40**



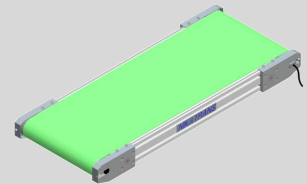
Tipos de transportador / Type of conveyor



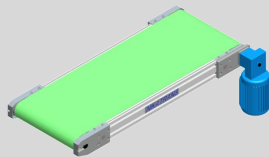
**NT 110 10**



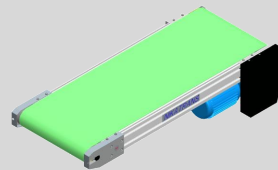
**NT 110 20**



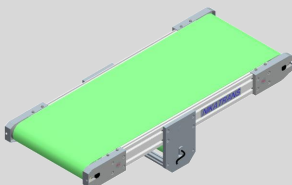
**NT 121 10**



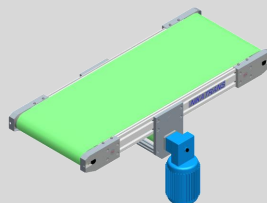
**NT 121 21**



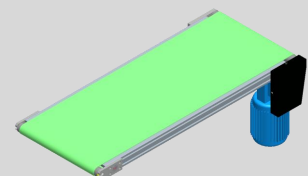
**NT 121 25**



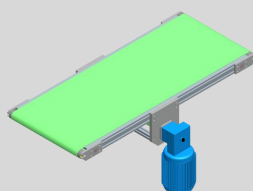
**NT 121 30**



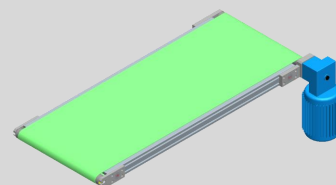
**NT 121 40**



**NT 150 10**

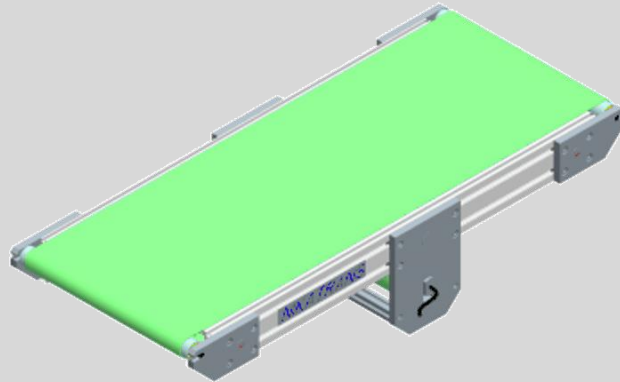


**NT 150 30**



**NT 150 40**

## NT 110 10



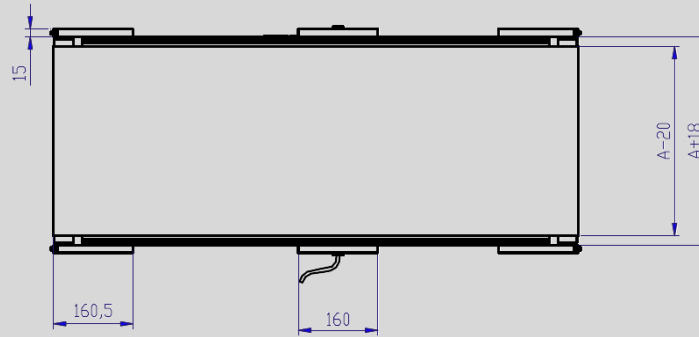
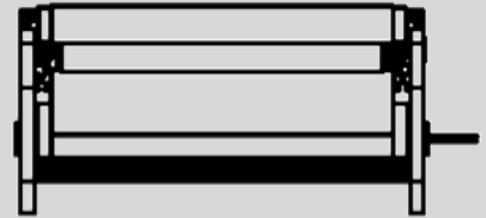
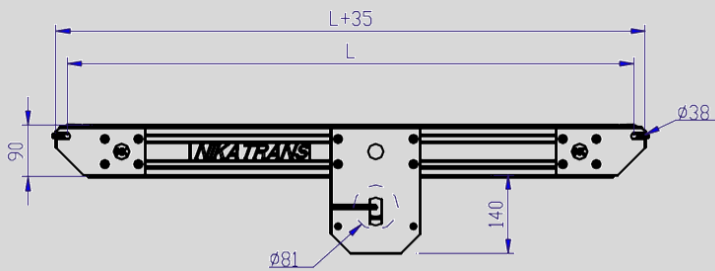
- Transportador de banda con accionamiento por mototambor (Ø81 mm) en posición central. Idóneo para el funcionamiento en ambos sentidos.
- Chasis construido en perfil de aluminio extrusionado.
- Rodillo de apoyo de tela en ramal de retorno en tubo de aluminio de Ø50mm anodizado.
- Placas de amarre de los tambores en duraluminio anodizado.
- Disponible: acero zincado o acero inoxidable
- Tensiones:
  - Monofásico (220 V / 50Hz)
  - Trifásico (380V / 50 Hz)
- Tambores de reenvío Ø38 mm con camisa de aluminio y eje de acero pavonado.
- Rodamientos a bolas con engrases de por vida.
- Lecho de apoyo de tela en chapa de acero galvanizada o acero inoxidable.




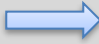



- Belt conveyor drive by drum motor (Ø81 mm) in central position. Ideal for operating in both directions.
- Chassis constructed in extruded aluminum profile.
- Underneath belt support rollers made of anodized Ø50mm aluminum.
- Drum flanges made of anodised duraluminium.
- Available: zinc plated or stainless steel
- Tension:
  - Single phase (220 V / 50Hz)
  - Three-phase (380V / 50 Hz)
- Return drums Ø38 mm covered with aluminium and blue steel axle.
- Ball bearings with lifetime lubrication.
- Belt bed plate made out of Galvanized or stainless sheet steel.

# NT 100

## Transportador de banda Belt conveyor

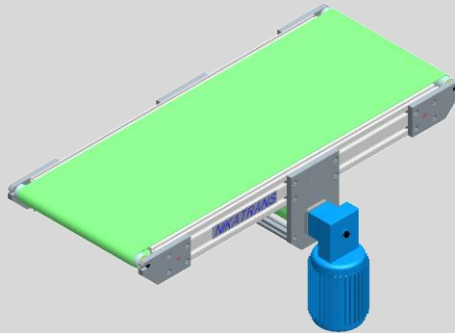


### Información técnica / Technical information

|   |         |                             |       |       |       |       |       |       |       |
|---|---------|-----------------------------|-------|-------|-------|-------|-------|-------|-------|
| A   | mm      | 300 - 950                   |       |       |       |       |       |       |       |
| L   | mm      | max. 5000                   |       |       |       |       |       |       |       |
|  | V       | 3 x 220 / 3 x 380 / 2 x 220 |       |       |       |       |       |       |       |
|  | m / min | 4,8                         | 7,2   | 9,6   | 13    | 16    | 36    | 43    | 53    |
|  | Kg      | 40                          | 30    | 30    | 50    | 40    | 20    | 16    | 16    |
|  | Kw      | 0,075                       | 0,075 | 0,085 | 0,085 | 0,085 | 0,085 | 0,085 | 0,085 |
|   | Nm      | 10,8                        | 21,5  | 19,5  | 13,3  | 10,8  | 5,2   | 4,3   | 3,5   |
|  | °C      | (+10) - (+40)               |       |       |       |       |       |       |       |



### NT 110 20



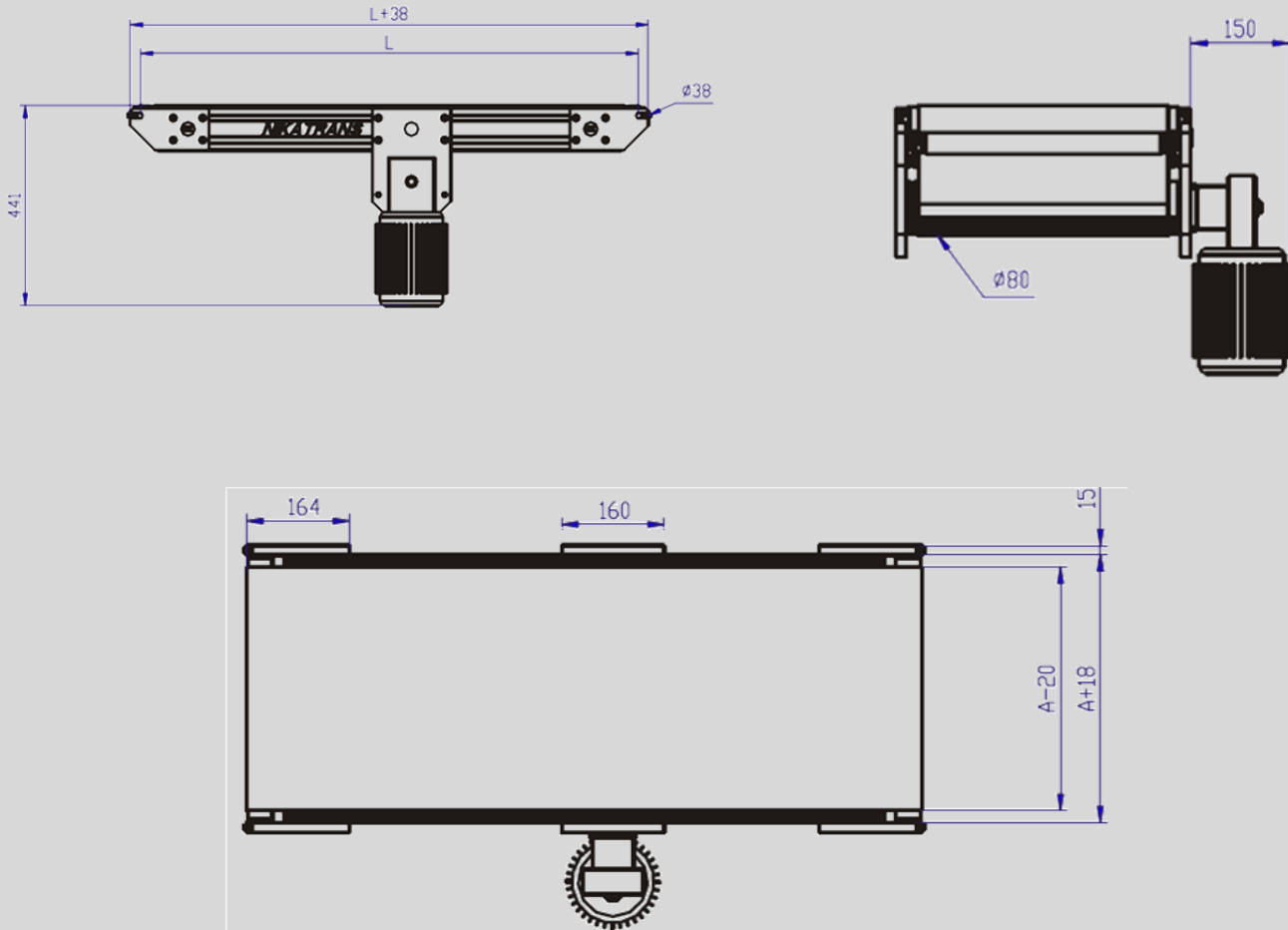
- Transportador de banda con accionamiento por motorreductor en posición central. Idóneo para el funcionamiento en ambos sentidos.
- Chasis construido en perfil de aluminio extrusionado.
- Rodillo de apoyo de tela en ramal de retorno en tubo de aluminio de Ø50mm anodizado.
- Placas de amarre de los tambores en duraluminio anodizado.
- Disponible: acero zincado o acero inoxidable
- Tensiones:
  - Monofásico (220 V / 50Hz)
  - Trifásico (380V / 50 Hz)
- Tambores de reenvío Ø38 mm con camisa de aluminio y eje de acero pavonado.
- Rodamientos a bolas con engrases de por vida.
- Lecho de apoyo de tela en chapa de acero galvanizada o acero inoxidable.



- Belt conveyor drive by gear motor in central position. Ideal for operating in both directions.
- Chassis constructed in extruded aluminum profile.
- Underneath belt support rollers made of anodized Ø50mm aluminum.
- Drum flanges made of anodised duraluminium.
- Available; zinc plated or stainless steel
- Tension:
  - Single phase (220 V / 50Hz)
  - Three-phase (380V / 50 Hz)
- Return drums Ø38 mm covered with aluminium and blue steel axle.
- Ball bearings with lifetime lubrication.
- Belt bed plate made out of Galvanized or stainless sheet steel.

# NT 100

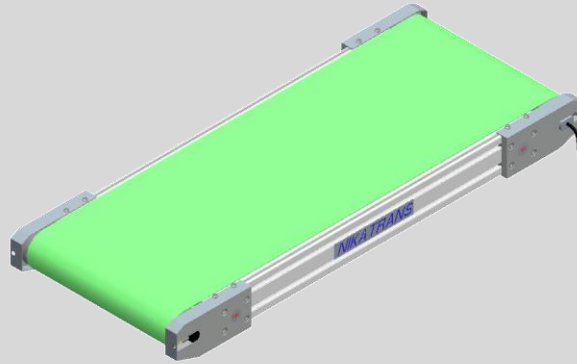
## Transportador de banda Belt conveyor



### Información técnica / Technical information

|   |         |                   |      |      |      |      |      |
|---|---------|-------------------|------|------|------|------|------|
| A | mm      | 250 - 450         |      |      |      |      |      |
| L | mm      | max. 5000         |      |      |      |      |      |
|   | V       | 3 x 220 / 3 x 380 |      |      |      |      |      |
|   | m / min | 5                 | 7,5  | 10   | 13,5 | 20   | 30   |
|   | Kg      | 100               | 80   | 60   | 50   | 60   | 60   |
|   | Kw      | 0,12              | 0,12 | 0,12 | 0,12 | 0,18 | 0,25 |
|   | Nm      | 25                | 18   | 15   | 12   | 16   | 16   |
|   | °C      | (+10) - (+40)     |      |      |      |      |      |

### NT 121 10



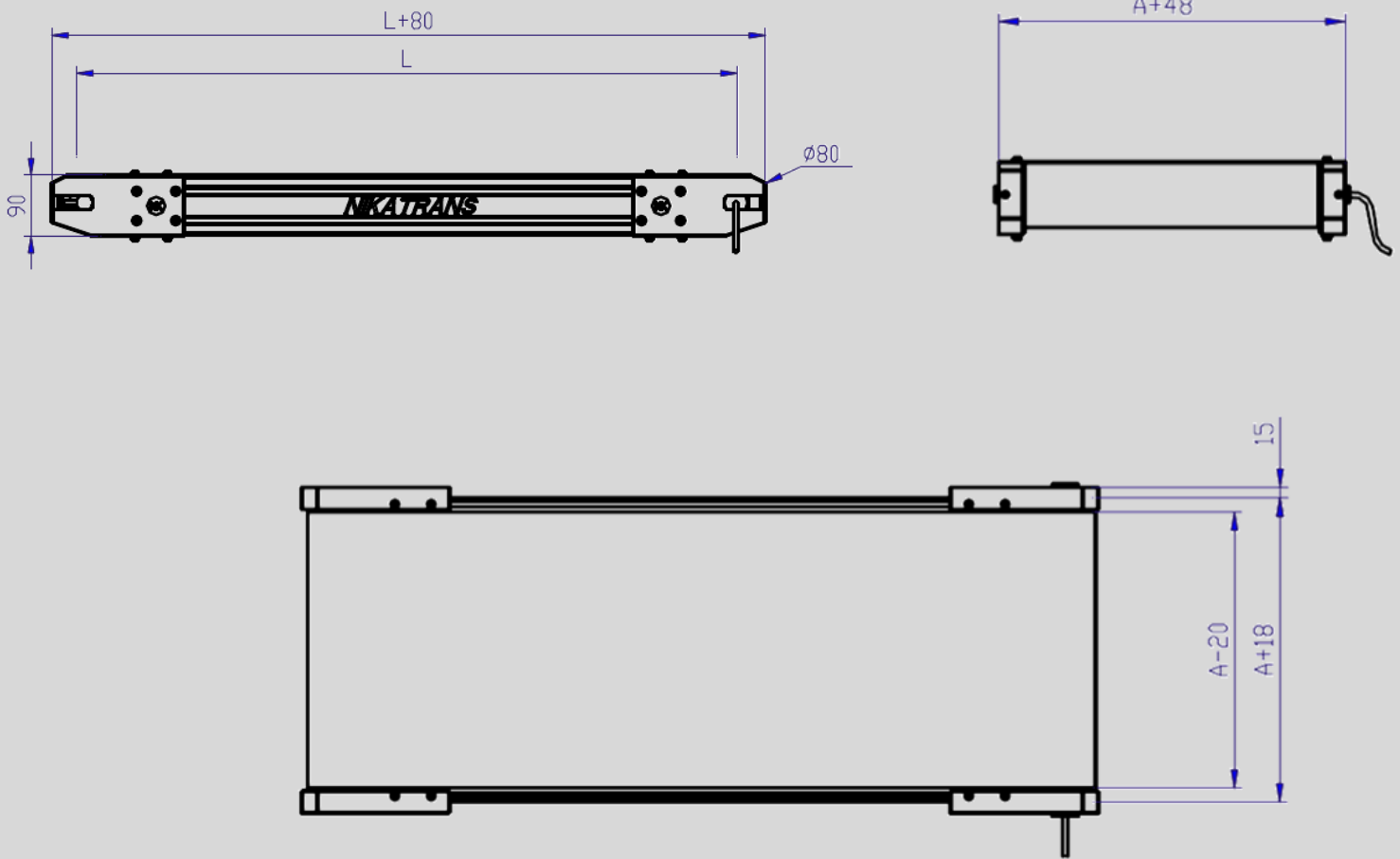
- Transportador de banda con accionamiento por mototambor (Ø81 mm) en posición extremol.
- Chasis construido en perfil de aluminio extrusionado.
- Rodillo de apoyo de tela en ramal de retorno en tubo de aluminio de Ø50mm anodizado.
- Placas de amarre de los tambores en duraluminio anodizado.
- Disponible: acero zincado o acero inoxidable
- Tensiones:
  - Monofásico (220 V / 50Hz)
  - Trifásico (380V / 50 Hz)
- Tambores de reenvío Ø80 mm con camisa de aluminio y eje de acero pavonado.
- Rodamientos a bolas con engrases de por vida.
- Lecho de apoyo de tela en chapa de acero galvanizada o acero inoxidable.



- Belt conveyor drive by drum (Ø81 mm) located at end.
- Chassis constructed in extruded aluminum profile.
- Underneath belt support rollers made of anodized Ø50mm aluminum.
- Drum flanges made of anodised duraluminium.
- Available: zinc plated or stainless steel
- Tension:
  - Single phase (220 V / 50Hz)
  - Three-phase (380V / 50 Hz)
- Return drums Ø38 mm covered with aluminium and blue steel axle.
- Ball bearings with lifetime lubrication.
- Belt bed plate made out of Galvanized or stainless sheet steel.

# NT 100

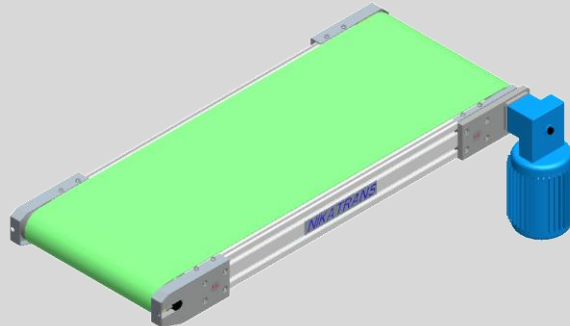
## Transportador de banda Belt conveyor



### Información técnica / Technical information

|   |         |                             |       |       |       |       |       |       |       |
|---|---------|-----------------------------|-------|-------|-------|-------|-------|-------|-------|
| A | mm      | 300 - 950                   |       |       |       |       |       |       |       |
| L | mm      | max. 5000                   |       |       |       |       |       |       |       |
|   | V       | 3 x 220 / 3 x 380 / 2 x 220 |       |       |       |       |       |       |       |
|   | m / min | 4,8                         | 7,2   | 9,6   | 13    | 16    | 36    | 43    | 53    |
|   | Kg      | 40                          | 30    | 30    | 50    | 40    | 20    | 16    | 16    |
|   | Kw      | 0,075                       | 0,075 | 0,085 | 0,085 | 0,085 | 0,085 | 0,085 | 0,085 |
|   | Nm      | 10,8                        | 21,5  | 19,5  | 13,3  | 10,8  | 5,2   | 4,3   | 3,5   |
|   | °C      | (+10) - (+40)               |       |       |       |       |       |       |       |

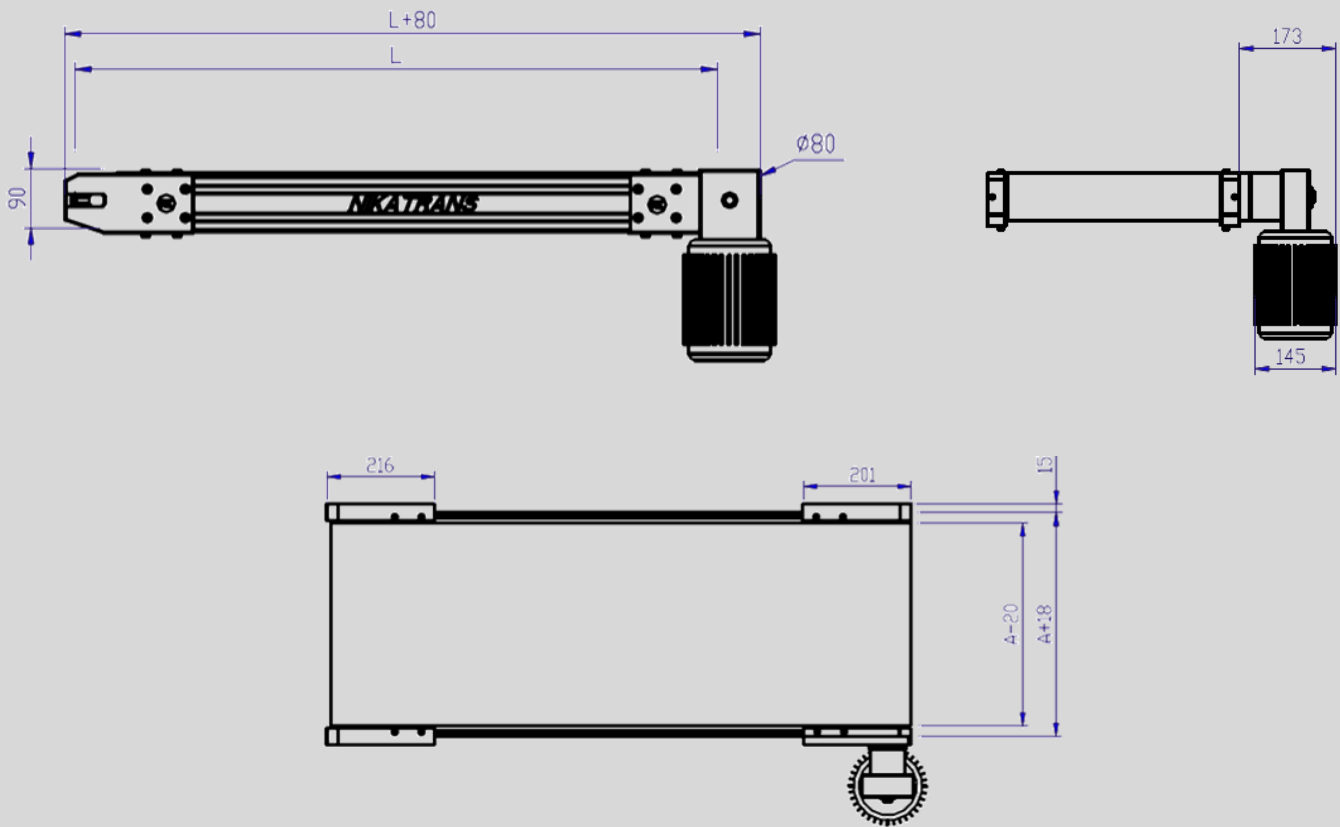
### NT 121 21



- Transportador de banda con accionamiento por motorreductor en posición extremo
- Chasis construido en perfil de aluminio extrusionado.
- Rodillo de apoyo de tela en ramal de retorno en tubo de aluminio de Ø50mm anodizado.
- Placas de amarre de los tambores en duraluminio anodizado.
- Disponible: acero zincado o acero inoxidable
- Tambor motriz Ø80 mm con camisa de aluminio y eje de acero pavonado.
- Rodamientos a bolas con engrases de por vida.
- Lecho de apoyo de tela en chapa de acero galvanizada o acero inoxidable.



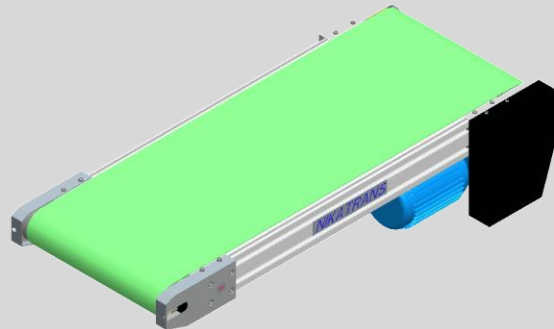
- Belt conveyor drive by gear motor located at end.
- Chassis constructed in extruded aluminum profile.
- Underneath belt support rollers made of anodized Ø50mm aluminum.
- Drum flanges made of anodised duraluminium.
- Available: zinc plated or stainless steel
- Drive drum Ø80 mm covered with aluminium and blue steel axle.
- Ball bearings with lifetime lubrication.
- Belt bed plate made out of Galvanized or stainless sheet steel.



### Información técnica / Technical information

|   |         |                   |      |      |      |      |      |      |
|---|---------|-------------------|------|------|------|------|------|------|
| A | mm      | 250 - 800         |      |      |      |      |      |      |
| L | mm      | max. 5000         |      |      |      |      |      |      |
|   | V       | 3 x 220 / 3 x 380 |      |      |      |      |      |      |
|   | m / min | 3                 | 5    | 7,5  | 10   | 14   | 20   | 30   |
|   | Kg      | 160               | 100  | 120  | 140  | 110  | 140  | 100  |
|   | Kw      | 0,12              | 0,12 | 0,18 | 0,25 | 0,25 | 0,37 | 0,37 |
|   | Nm      | 54                | 25   | 31   | 35   | 27   | 33   | 25   |
|   | °C      | (-10) - (+80)     |      |      |      |      |      |      |

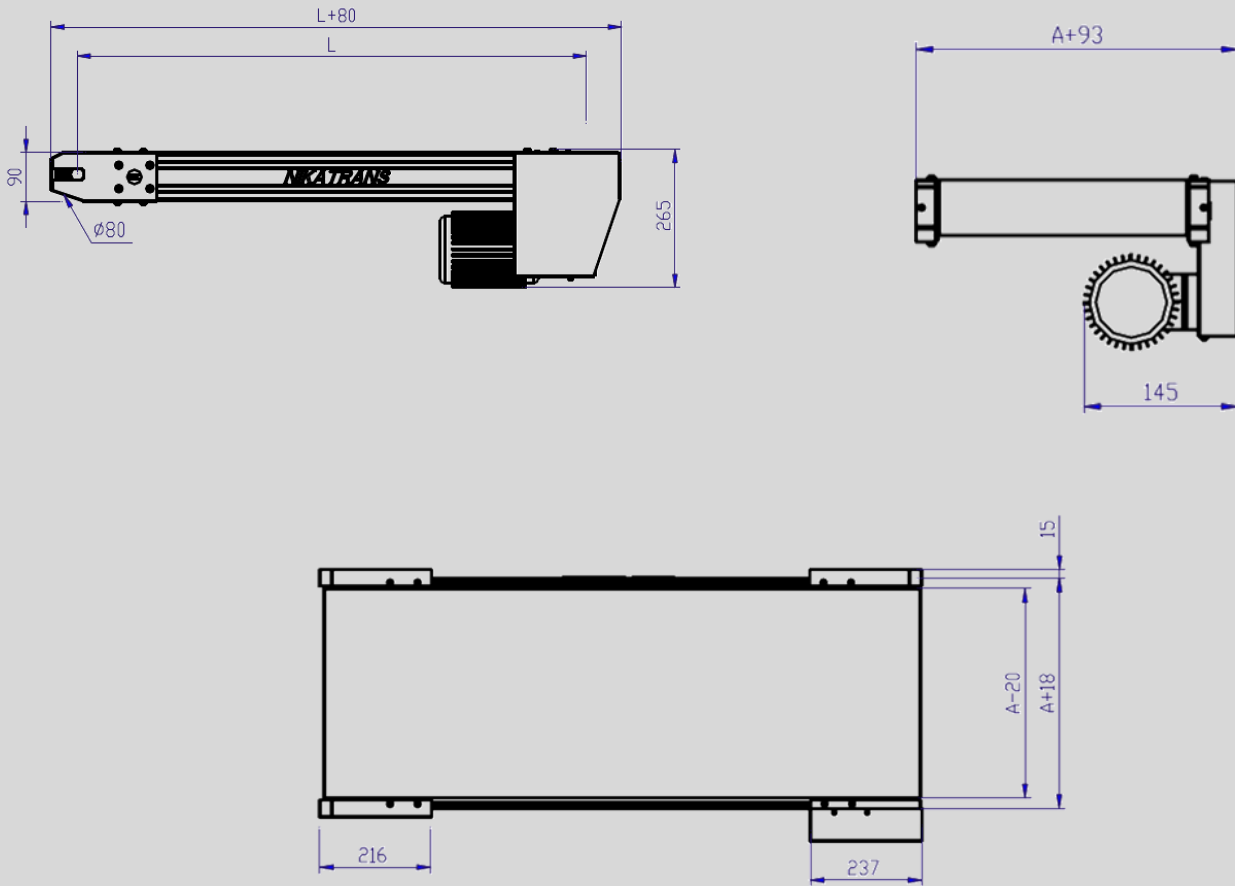
### NT 121 25



- Transportador de banda con accionamiento indirecto por motorreductor en posición inferior extremo.
- Chasis construido en perfil de aluminio extrusionado.
- Transmisión por medio de cadena y piñones de 1/2".
- Protección de transmisión en chapa de acero.
- Rodillo de apoyo de tela en ramal de retorno en tubo de aluminio de Ø50mm anodizado.
- Placas de amarre de los tambores en duraluminio anodizado.
- Disponible: acero zincado o acero inoxidable
- Tambor motriz y reenvío Ø80 mm con camisa de aluminio y eje de acero pavonado.
- Rodamientos a bolas con engrases de por vida.
- Lecho de apoyo de tela en chapa de acero galvanizada o acero inoxidable.



- Belt conveyor indirectly driven by gear motor in down position, located at end.
- Chassis constructed in extruded aluminum profile.
- Transmission by chain and 1/2" pinion.
- Painted steel transmission protection.
- Underneath belt support rollers made of anodized Ø50mm aluminum.
- Drum flanges made of anodised duraluminium.
- Available: zinc plated or stainless steel
- Return drums Ø80 mm covered with aluminium and blue steel axle.
- Ball bearings with lifetime lubrication.
- Belt bed plate made out of Galvanized or stainless sheet steel.

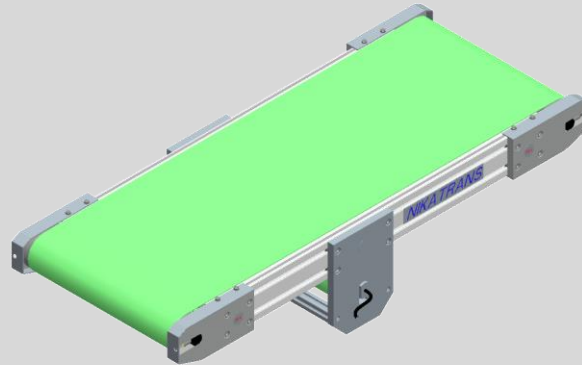


### Información técnica / Technical information

|   |         |                   |      |      |      |      |      |      |
|---|---------|-------------------|------|------|------|------|------|------|
| A | mm      | 250 - 800         |      |      |      |      |      |      |
| L | mm      | max. 10.000       |      |      |      |      |      |      |
|   | V       | 3 x 220 / 3 x 380 |      |      |      |      |      |      |
|   | m / min | 5                 | 7,5  | 10   | 13,5 | 20   | 30   | 40   |
|   | Kg      | 80                | 120  | 140  | 110  | 140  | 150  | 120  |
|   | Kw      | 0,12              | 0,18 | 0,25 | 0,25 | 0,37 | 0,55 | 0,55 |
|   | Nm      | 21                | 31   | 35   | 27   | 33   | 37   | 29   |
|   | °C      | (-10) - (+80)     |      |      |      |      |      |      |



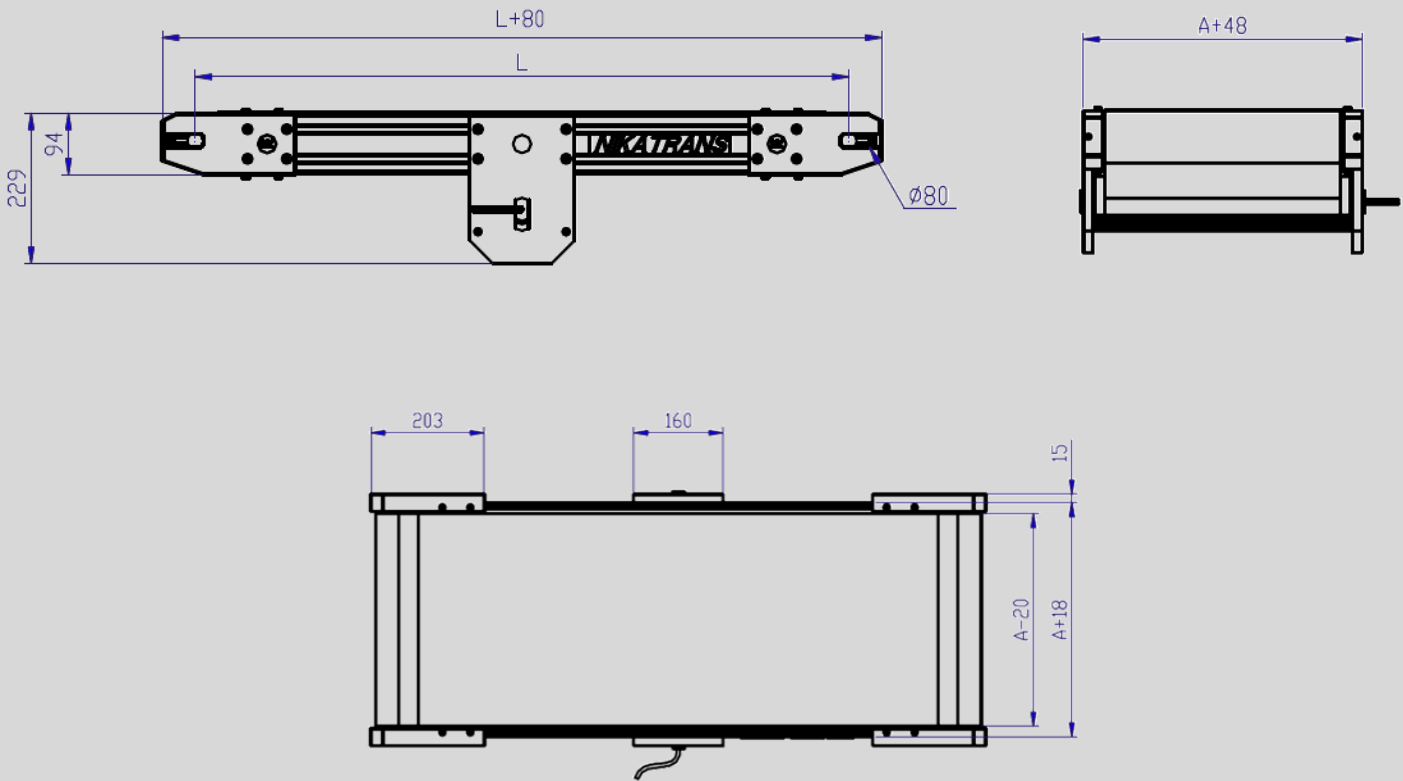
### NT 121 30



- Transportador de banda con accionamiento por mototambor (Ø81 mm) en posición central. Avance reversible del transportador.
- Montaje del conjunto motriz en cualquier punto a lo largo del transportador.
- Chasis construido en perfil de aluminio extrusionado.
- Rodillo de apoyo de tela en ramal de retorno en tubo de aluminio de Ø50mm anodizado.
- Placas de amarre de los tambores en duraluminio anodizado.
- Disponible: acero zincado o acero inoxidable
- Tensiones:
  - Monofásico (220 V / 50Hz)
  - Trifásico (380V / 50 Hz)
- Tambores de reenvío Ø80 mm con camisa de aluminio y eje de acero pavonado.
- Rodamientos a bolas con engrases de por vida.



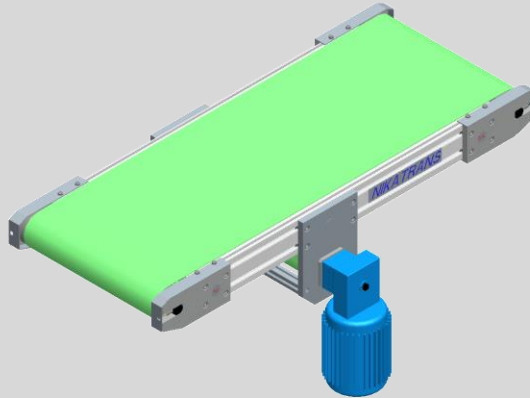
- Lecho de apoyo de tela en chapa de acero galvanizada o acero inoxidable.
- Belt conveyor drive by drum (Ø81 mm) in central position. Conveyor direction can be reverse.
- Drum can be place anywhere along the conveyor.
- Chassis constructed in extruded aluminum profile.
- Underneath belt support rollers made of anodized Ø50mm aluminum.
- Drum flanges made of anodised duraluminium.
- Available: zinc plated or stainless steel
- Tension:
  - Single phase (220 V / 50Hz)
  - Three-phase (380V / 50 Hz)
- Return drums Ø80 mm covered with aluminium and blue steel axle.
- Ball bearings with lifetime lubrication.
- Belt bed plate made out of Galvanized or stainless sheet steel.



### Información técnica / Technical information

|   |         |                             |       |       |       |       |       |       |       |
|---|---------|-----------------------------|-------|-------|-------|-------|-------|-------|-------|
| A | mm      | 300 - 950                   |       |       |       |       |       |       |       |
| L | mm      | max. 5.000                  |       |       |       |       |       |       |       |
|   | V       | 3 x 220 / 3 x 380 / 2 x 220 |       |       |       |       |       |       |       |
|   | m / min | 4,8                         | 7,2   | 9,6   | 13    | 16    | 36    | 43    | 53    |
|   | Kg      | 40                          | 30    | 30    | 50    | 40    | 20    | 16    | 16    |
|   | Kw      | 0,075                       | 0,075 | 0,085 | 0,085 | 0,085 | 0,085 | 0,085 | 0,085 |
|   | Nm      | 10,8                        | 21,5  | 19,5  | 13,3  | 10,8  | 5,2   | 4,3   | 3,5   |
|   | °C      | (-10) - (+80)               |       |       |       |       |       |       |       |

### NT 121 40



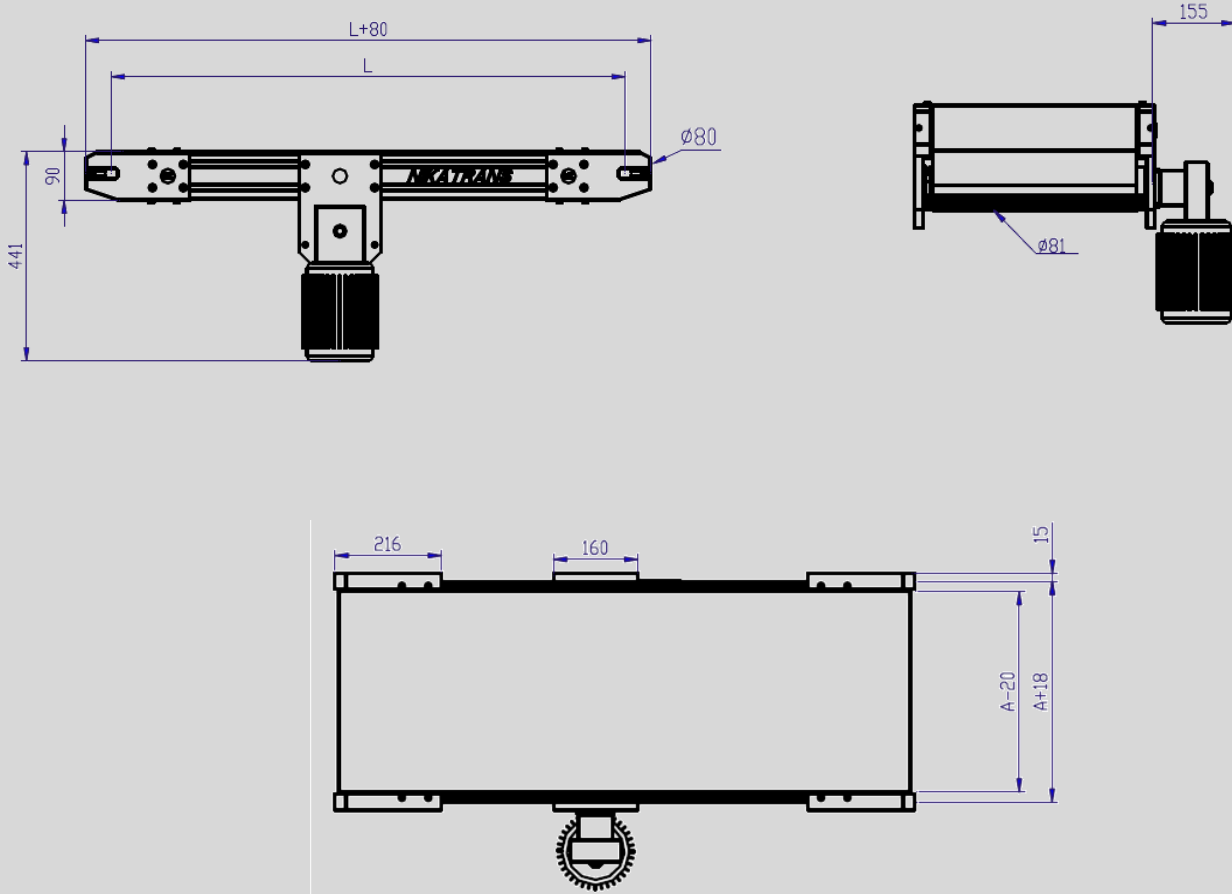
- Transportador de banda con accionamiento por motorreductor en posición central. Avance reversible del transportador.
- Montaje del conjunto motriz en cualquier punto a lo largo del transportador.
- Chasis construido en perfil de aluminio extrusionado.
- Rodillo de apoyo de tela en ramal de retorno en tubo de aluminio de Ø50mm anodizado.
- Placas de amarre de los tambores en duraluminio anodizado.
- Disponible: acero zincado o acero inoxidable
- Tambor motriz Ø80 mm con camisa de aluminio y eje de acero pavonado.
- Rodamientos a bolas con engrases de por vida.
- Lecho de apoyo de tela en chapa de acero galvanizada o acero inoxidable.



- Belt conveyor drive by gear motor in central position. Conveyor direction can be reversed.
- Drum can be place anywhere along the conveyor.
- Chassis constructed in extruded aluminum profile.
- Underneath belt support rollers made of anodized Ø50mm aluminum.
- Drum flanges made of anodised duraluminium.
- Available: zinc plated or stainless steel
- Return drums Ø80 mm covered with aluminium and blue steel axle.
- Ball bearings with lifetime lubrication.
- Belt bed plate made out of Galvanized or stainless sheet steel.

# NT 100

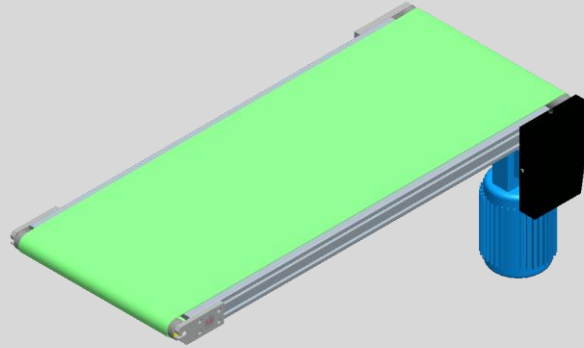
## Transportador de banda Belt conveyor



### Información técnica / Technical information

|   |         |                   |      |      |      |      |      |
|---|---------|-------------------|------|------|------|------|------|
| A | mm      | 250 - 450         |      |      |      |      |      |
| L | mm      | max. 5.000        |      |      |      |      |      |
|   | V       | 3 x 220 / 3 x 380 |      |      |      |      |      |
|   | m / min | 5                 | 7,5  | 10   | 13,5 | 20   | 30   |
|   | Kg      | 100               | 80   | 60   | 50   | 60   | 60   |
|   | Kw      | 0,12              | 0,12 | 0,12 | 0,12 | 0,18 | 0,25 |
|   | Nm      | 25                | 18   | 15   | 12   | 16   | 16   |
|   | °C      | (-10) - (+80)     |      |      |      |      |      |

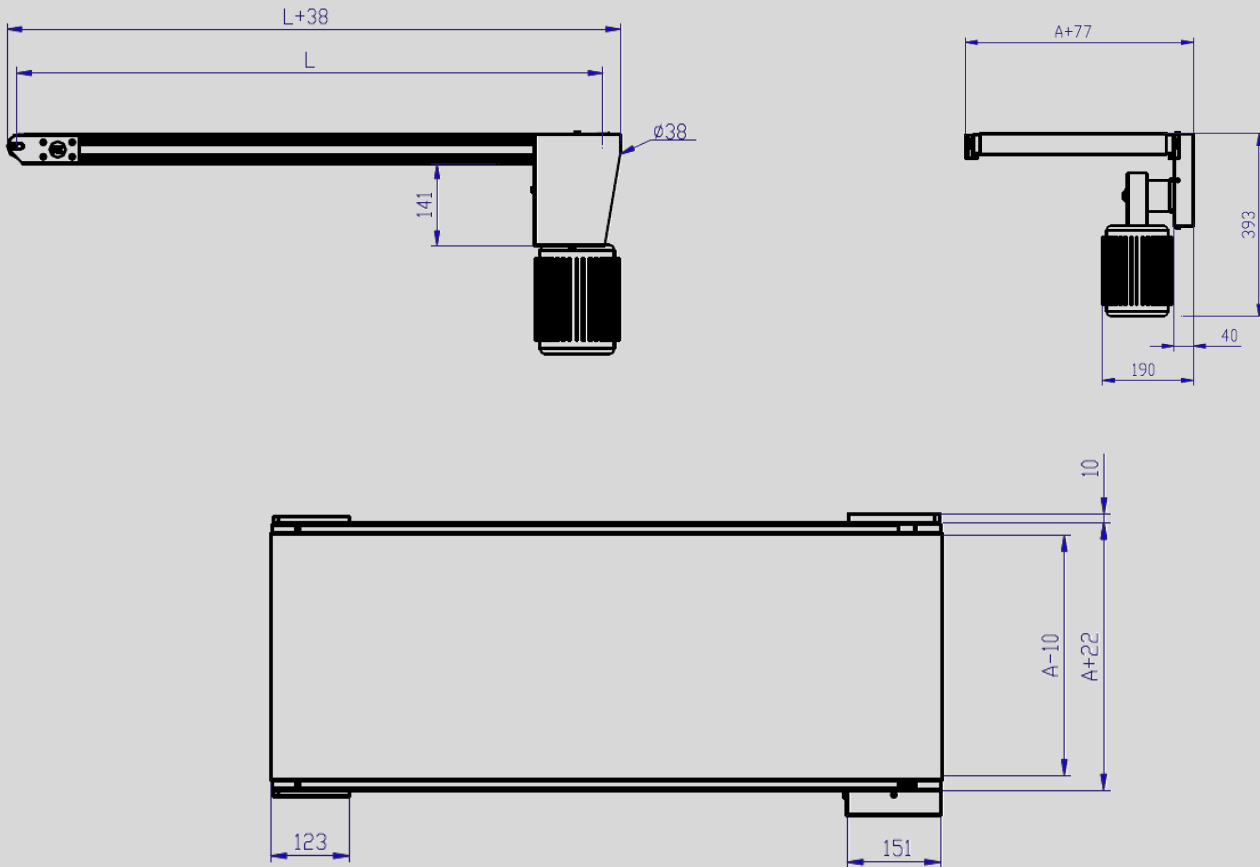
### NT 150 10



- Transportador de banda con accionamiento indirecto por motorreductor en posición inferior extremo.
- Chasis construido en perfil de aluminio extrusionado.
- Transmisión por medio de cadena y piñones de 3/8".
- Protección de transmisión en chapa de acero.
- Rodillo de apoyo de tela en ramal de retorno en tubo de aluminio de Ø25mm anodizado.
- Placas de amarre de los tambores en duraluminio anodizado.
- Disponible: acero zincado o acero inoxidable
- Tambor motriz y reenvío Ø38 mm con camisa de aluminio y eje de acero pavonado.
- Rodamientos a bolas con engrases de por vida.
- Lecho de apoyo de tela en chapa de acero galvanizada o acero inoxidable.



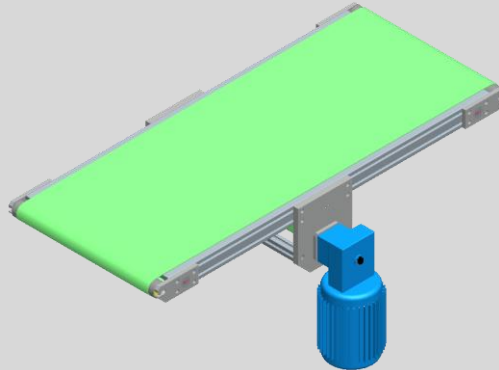
- Belt conveyor indirectly driven by gear motor in down position, located at end.
- Chassis constructed in extruded aluminum profile.
- Transmission by chain and 3/8" pinion.
- Painted steel transmission protection.
- Underneath belt support rollers made of anodized Ø25mm aluminum.
- Drum flanges made of anodised duraluminium.
- Available: zinc plated or stainless steel
- Return drums Ø38 mm covered with aluminium and blue steel axle.
- Ball bearings with lifetime lubrication.
- Belt bed plate made out of Galvanized or stainless sheet steel.



### Información técnica / Technical information

|   |         |                   |      |      |      |      |      |
|---|---------|-------------------|------|------|------|------|------|
| A | mm      | 50 - 450          |      |      |      |      |      |
| L | mm      | max. 4.000        |      |      |      |      |      |
|   | V       | 3 x 220 / 3 x 380 |      |      |      |      |      |
|   | m / min | 5                 | 9    | 14   | 18   | 25   | 31   |
|   | Kg      | 35                | 35   | 35   | 35   | 35   | 35   |
|   | Kw      | 0,12              | 0,18 | 0,18 | 0,25 | 0,20 | 0,37 |
|   | Nm      | 15                | 16   | 12   | 13   | 10   | 12   |
|   | °C      | (-10) - (+80)     |      |      |      |      |      |

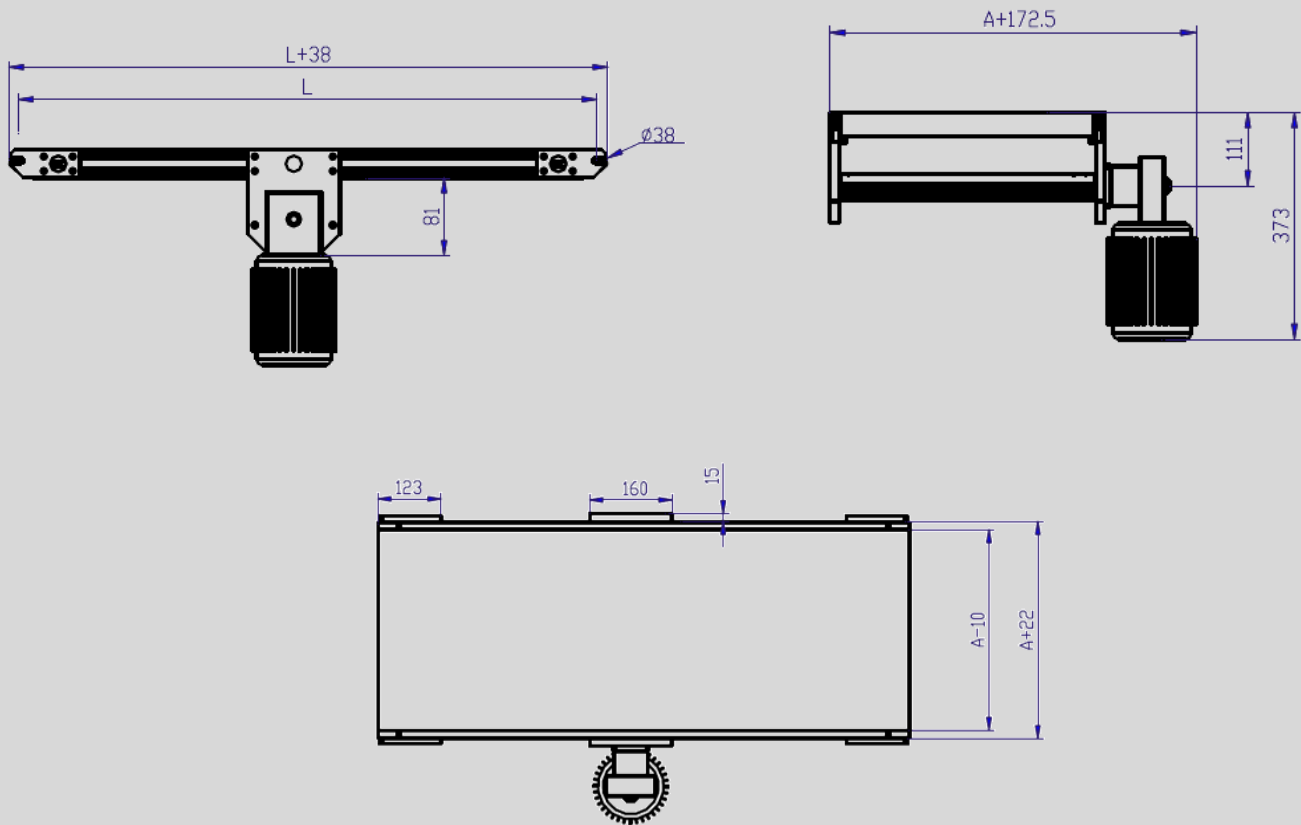
### NT 150 30



- Transportador de banda con accionamiento por motorreductor en posición central. Avance reversible del transportador.
- Montaje del conjunto motriz en cualquier punto a lo largo del transportador.
- Chasis construido en perfil de aluminio extrusionado.
- Rodillo de apoyo de tela en ramal de retorno en tubo de aluminio de Ø25mm anodizado.
- Placas de amarre de los tambores en duraluminio anodizado.
- Disponible: acero zincado o acero inoxidable
- Tambor motriz Ø38 mm con camisa de aluminio y eje de acero pavonado.
- Rodamientos a bolas con engrases de por vida.
- Lecho de apoyo de tela en chapa de acero galvanizada o acero inoxidable.



- Belt conveyor drive by gear motor in central position. Conveyor direction can be reversed.
- Drum can be place anywhere along the conveyor.
- Chassis constructed in extruded aluminum profile.
- Underneath belt support rollers made of anodized Ø25mm aluminum.
- Drum flanges made of anodised duraluminium.
- Available: zinc plated or stainless steel
- Return drums Ø38 mm covered with aluminium and blue steel axle.
- Ball bearings with lifetime lubrication.
- Belt bed plate made out of Galvanized or stainless sheet steel.

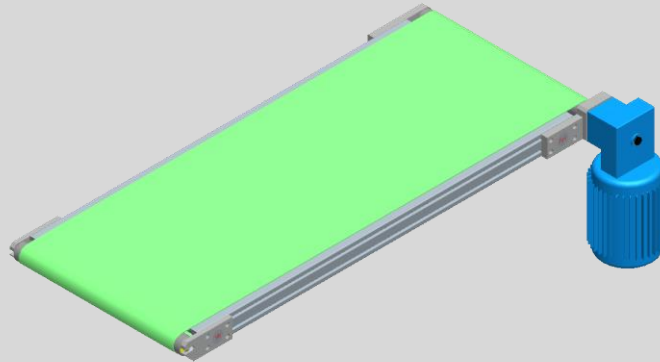


### Información técnica / Technical information

|   |         |                   |      |      |      |      |      |
|---|---------|-------------------|------|------|------|------|------|
| A | mm      | 50 - 450          |      |      |      |      |      |
| L | mm      | max. 4.000        |      |      |      |      |      |
|   | V       | 3 x 220 / 3 x 380 |      |      |      |      |      |
|   | m / min | 5                 | 9    | 14   | 18   | 25   | 31   |
|   | Kg      | 35                | 35   | 35   | 35   | 35   | 35   |
|   | Kw      | 0,12              | 0,18 | 0,18 | 0,25 | 0,20 | 0,37 |
|   | Nm      | 15                | 16   | 12   | 13   | 10   | 12   |
|   | °C      | (-10) - (+80)     |      |      |      |      |      |



### NT 150 40



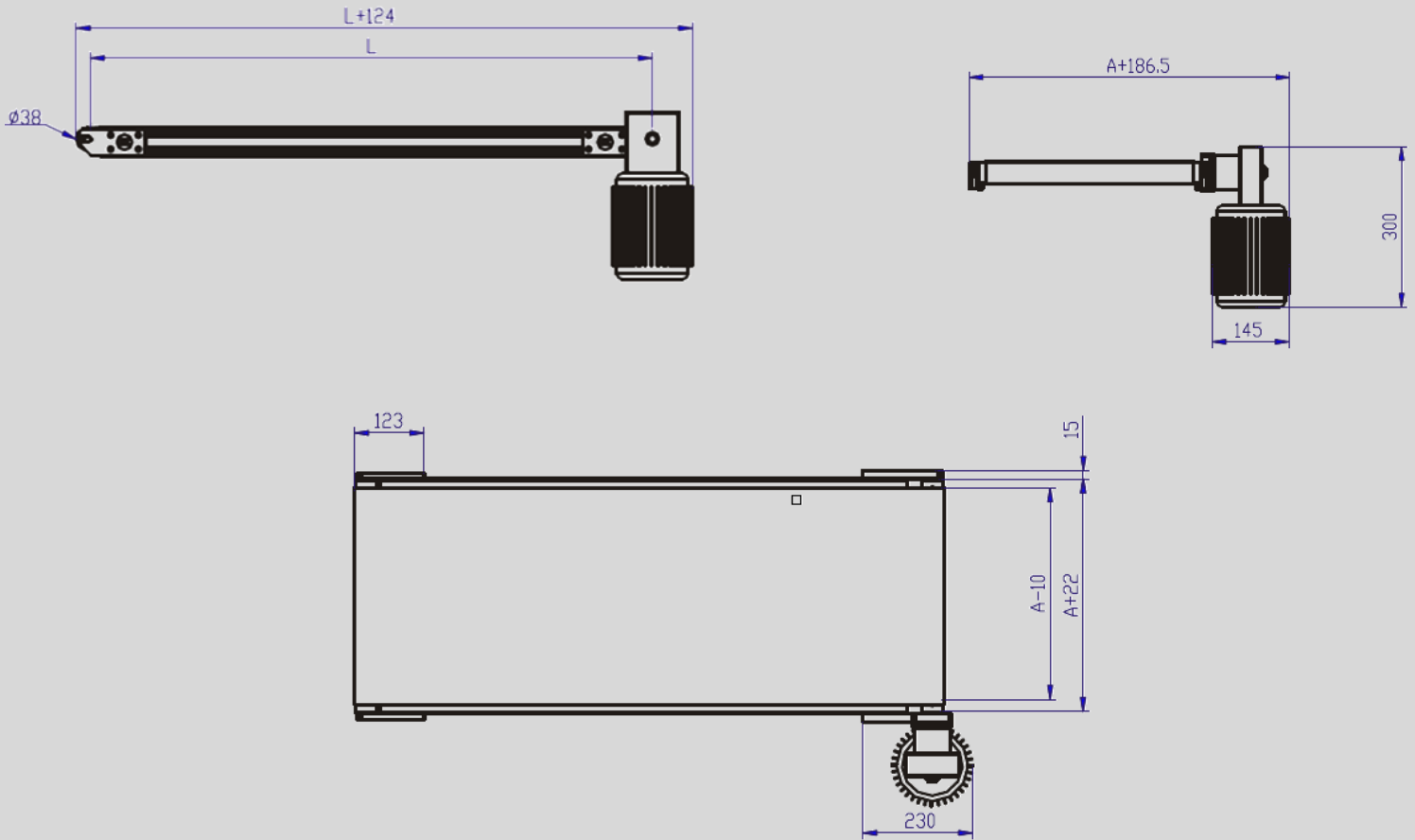
- Transportador de banda con accionamiento por motorreductor en posición extremo
- Chasis construido en perfil de aluminio extrusionado.
- Rodillo de apoyo de tela en ramal de retorno en tubo de aluminio de Ø25mm anodizado.
- Placas de amarre de los tambores en duraluminio anodizado.
- Disponible: acero zincado o acero inoxidable
- Tambor motriz y reenvío Ø38 mm con camisa de aluminio y eje de acero pavonado.
- Rodamientos a bolas con engrases de por vida.
- Lecho de apoyo de tela en chapa de acero galvanizada o acero inoxidable.








- Belt conveyor drive by gear motor located at end.
- Chassis constructed in extruded aluminum profile.
- Underneath belt support rollers made of anodized Ø25mm aluminum.
- Drum flanges made of anodised duraluminium.
- Available: zinc plated or stainless steel
- Drive drum Ø38 mm covered with aluminium and blue steel axle.
- Ball bearings with lifetime lubrication.
- Belt bed plate made out of Galvanized or stainless sheet steel.

# NT 100

## Transportador de banda Belt conveyor





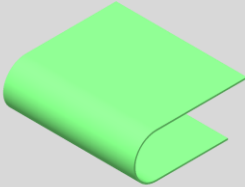
### Información técnica / Technical information

|   |         |                   |      |      |      |      |      |
|---|---------|-------------------|------|------|------|------|------|
| A   | mm      | 50 - 450          |      |      |      |      |      |
| L   | mm      | max. 4.000        |      |      |      |      |      |
|  | V       | 3 x 220 / 3 x 380 |      |      |      |      |      |
|  | m / min | 5                 | 9    | 14   | 18   | 25   | 31   |
|  | Kg      | 35                | 35   | 35   | 35   | 35   | 35   |
|  | Kw      | 0,12              | 0,18 | 0,18 | 0,25 | 0,20 | 0,37 |
|   | Nm      | 15                | 16   | 12   | 13   | 10   | 12   |
|  | °C      | (-10) - (+80)     |      |      |      |      |      |

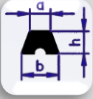

### Tipos de banda / Belt types

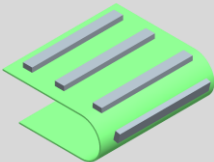
#### Bandas lisas / standard belts

|   | Kg / m <sup>2</sup> |  mm |
|---|---------------------|--|
| PVC   | 1,10                | 1,00   |
| PU  | 1,10                | 1,00   |
| FDA   | 0,90                | 0,80   |
|  | 3,50                | 3,00   |



#### Bandas con tacos / Belts with cleats

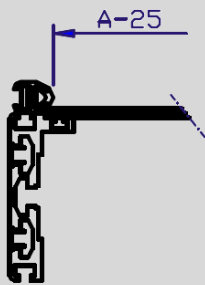
|   |     | b (mm) | h (mm) | a (mm) |
|---|-----|--------|--------|--------|
|  | PVC | 8      | 5      | 4,4    |
|   |     | 10     | 6      | 5,6    |
|  | PU  | 10     | 50     |        |
|   |     | 10     | 50     |        |



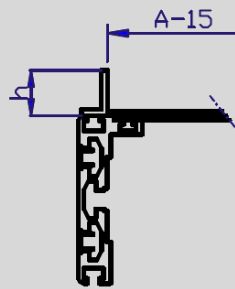
*\*Solo compatible con NT 121 10 y NT 121 21*

Accesorios para NT 100 / Accessories for NT 100

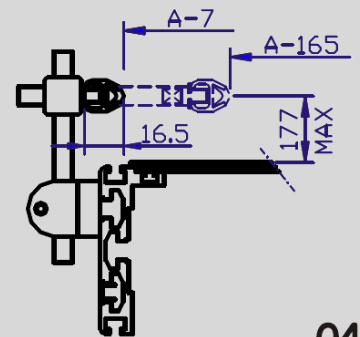
### Tipos de guía / Type of guides



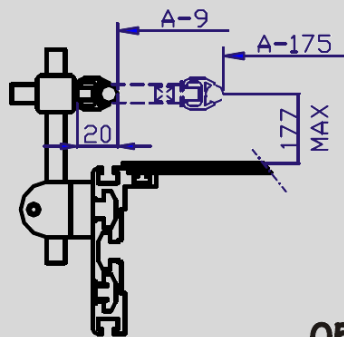
02



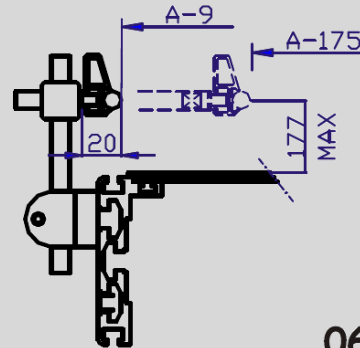
03



04



05



06